

INSTALLATION INSTRUCTIONS PART #5038 / 5000 SERIES 2003-08 FORD CROWN VICTORIA

Do not attempt to install this product on any vehicle other than the one it is designed for and listed above!

Parts List

Quantity	Description	Quantity	Description
8	1/4" PUSH PINS	4	1/2" LOCK WASHERS
8	3/8" X 1 1/4" HEX BOLTS	2	1/2" FLAT WASHERS
4	3/8" X 1 3/4" T- BOLTS	4	1/2" HEX NUTS
8	3/8" LOCK WASHERS	2	1/2" HOLE X 3/8" THICK RECTANGULAR SPACERS
4	3/8" FLAT WASHERS	1	5038AD DRIVER SIDE MOUNTING BRACKET
12	3/8" HEX NUTS	2	5038B SUPPORT BRACKETS
4	3/8" HOLE X 5/16" THICK ROUND SPACERS	1	5038AP PASSENGER SIDE MOUNTING BRACKET
4	1/2" X 1 1/2" HEX BOLTS		

WARNING

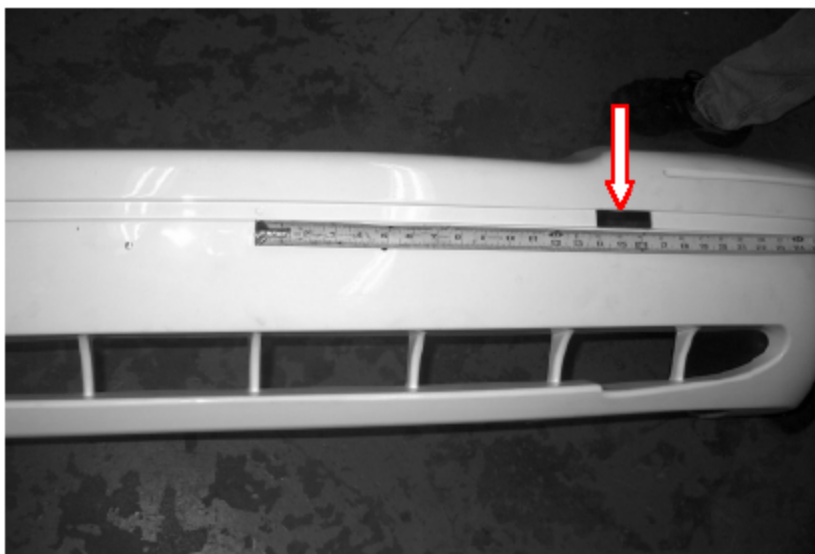
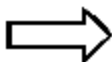
Carefully read all the instructions prior to attempting to install this product. If you are not familiar with using workshop tools or with workshop safety practices, take the product and vehicle to a skilled installer. Go Rhino! Products accept no responsibility for any damage or injuries that may result from the product(s) being incorrectly installed. Before attempting to install accessories, park the vehicle on flat level ground, apply the emergency brake and disconnect the battery. If installation requires the use of a jack or lift, use only one with the correct load rating for the vehicle, follow the manufacturer's instructions and use wheel chocks. After installation, check the operation of all lights and turn signals; periodically check all fasteners for tightness. Retighten only loose fasteners as over-tightening snug fasteners can result in breaking or stripping them. Failure to maintain tightness of fasteners could result in the product detaching itself from the vehicle and possibly jamming wheels etc. This condition could cause serious personal bodily injury.

WARNING

INSTALLATION INSTRUCTIONS:

STEP 1. READ THE INSTRUCTIONS COMPLETELY BEFORE YOU BEGIN THE INSTALLATION.

STEP 2. BEGIN BY NOTCHING THE DRIVER SIDE FRONT BUMPER FASCIA. FROM THE CENTER OF THE BUMPER, MEASURE ALONG THE TRIM CHANNEL 13 3/4" AND 16 3/4" AND MARK TWO VERTICAL LINES. USING A UTILITY KNIFE CUT AND REMOVE THE BUMPER FASCIA BETWEEN THE LINES AS SHOWN. REPEAT FOR THE PASSENGER SIDE.



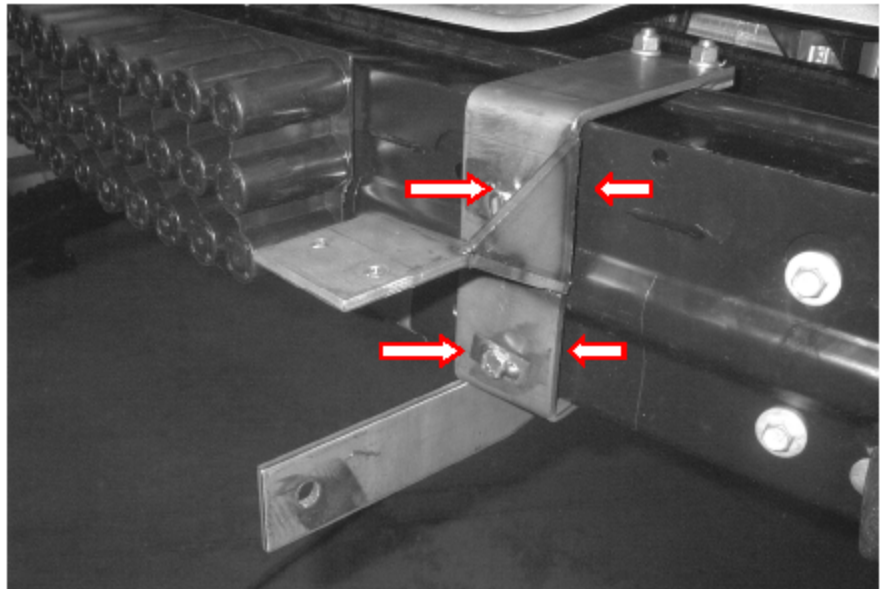
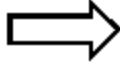
STEP 3. REMOVE THE BUMPER FASCIA AND THE PLASTIC RADIATOR AIR DEFLECTORS FROM THE VEHICLE.

STEP 4. ON THE DRIVER SIDE, LOCATE THE SECTION OF PLASTIC INSULATOR, WITH THE EXPOSED RIVET AND BUMPER BOLT. USING A UTILITY KNIFE CUT ALONG THE SEAMS AND AROUND THE RIVET, AND REMOVE THE SECTION OF PLASTIC INSULATOR.

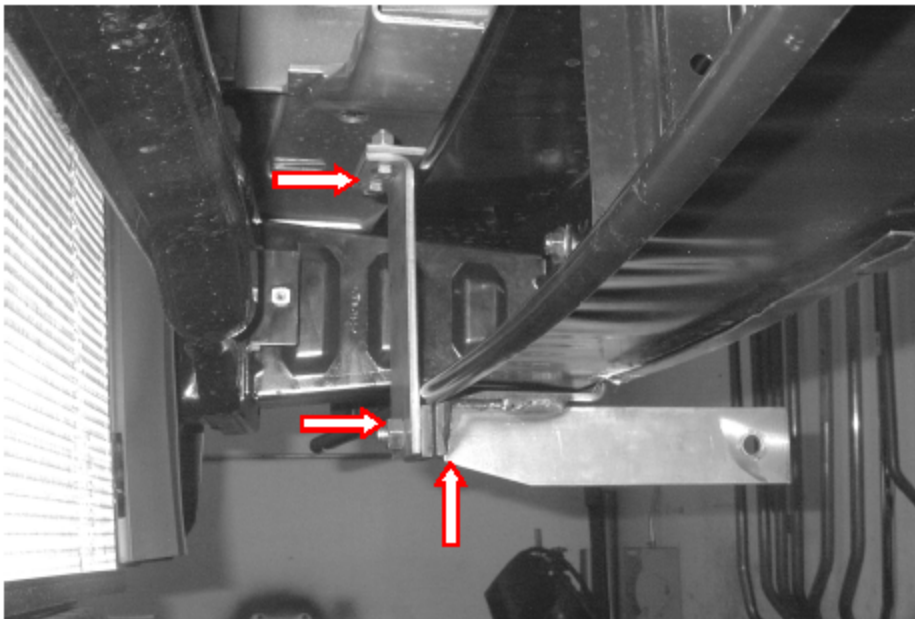
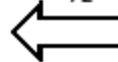
STEP 5. LOCATE THE FOUR BOLTS SECURING THE BUMPER TO THE REINFORCEMENT BRACKET. LOOSEN THE TWO OUTER BOLTS, AND REMOVE THE TWO TOWARDS THE CENTER, AND THE U-NUTS BEHIND THE BUMPER.

INSTALLATION INSTRUCTIONS
PART #5038 / 5000 SERIES
2003-07 FORD CROWN VICTORIA

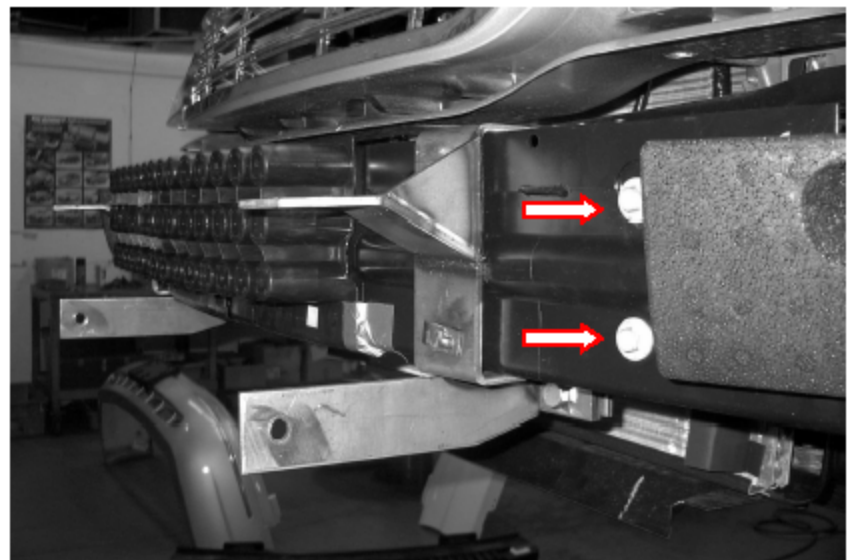
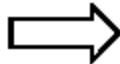
STEP 6. ATTACH 5038AD MOUNTING BRACKET TO THE BUMPER USING THE 3/8" T-BOLTS, 5/16" THICK SPACERS, AND NUTS. (FINGER TIGHTEN ONLY!)



STEP 7. POSITION ONE OF THE 5038B SUPPORT BRACKETS BEHIND THE BUMPER AND ATTACH IT TO THE TOP OF THE MOUNTING BRACKET USING THE 3/8" X 1 1/4" BOLTS, WASHERS AND NUTS AND TO THE BOTTOM USING THE 1/2" X 1 1/2" BOLT, SPACER, WASHER AND NUT. (FINGER TIGHTEN ONLY!)



STEP 8. TIGHTEN THE FACTORY BUMPER BOLTS, AND REPEAT STEPS 6 AND 7 FOR THE PASSENGER SIDE MOUNTING BRACKET.



INSTALLATION INSTRUCTIONS
PART #5038 / 5000 SERIES
2003-07 FORD CROWN VICTORIA

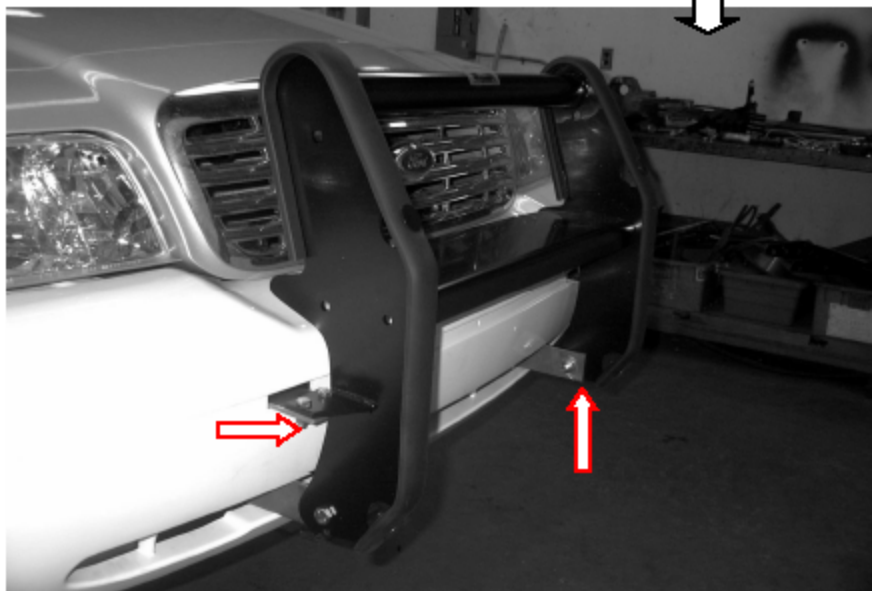
STEP 9. POSITION THE BUMPER FASCIA ON THE VEHICLE SO THE MOUNTING BRACKETS PROTRUDE THROUGH THE CUT OUTS AND BOTTOM OPENING. ATTACH THE BUMPER FASCIA TO THE VEHICLE USING THE FACTORY FASTENERS AND PUSH PINS SUPPLIED.



STEP 10. TRIM THE RADIATOR AIR DEFLECTORS TO FIT AROUND THE MOUNTING BRACKETS AND REINSTALL.



STEP 11. POSITION THE PUSH GUARD TABS ON TOP OF THE MOUNTING BRACKETS AND THE LOWER LEGS ON THE OUTSIDE. ATTACH THE PUSH GUARD TO THE MOUNTING BRACKETS USING THE 3/8" AND 1/2" FASTENERS. ALIGN THE PUSH GUARD WITH THE VEHICLE AND TIGHTEN ALL MOUNTING BRACKET AND PUSH GUARD NUTS AND BOLTS.



FOR TECHNICAL OR WARRANTY INFORMATION CALL:
GO RHINO! Products XtremeRacks QuickRacks
591 W. Apollo St. Brea, CA 92821
(714)255-0420 (888)427-4466 FAX(714)529-5252