



XAVER™ 400

COMPACT, TACTICAL THROUGH-WALL IMAGING SYSTEM



The Xaver™ 400 is a compact Radar based device, optimized for quick tactical decision making in urban operations. It provides real-time mission-critical information on live and static objects hidden behind walls and barriers, including:

- Presence of life in the room
- Number of people and their location inside a room
- Tracking of target movement patterns
- Room general layout, including dimensions and major infrastructure elements

Military, Law Enforcement and Search and Rescue teams conducting urban operations require reliable information for determining the necessary tactical approach to assure successful mission execution. The Xaver™ 400 dramatically improves situational awareness - providing a clear operational advantage and the ability to "step into the known"™. The Xaver™ 400 has been widely deployed by leading military and law enforcement users worldwide.

XAVER™ 400

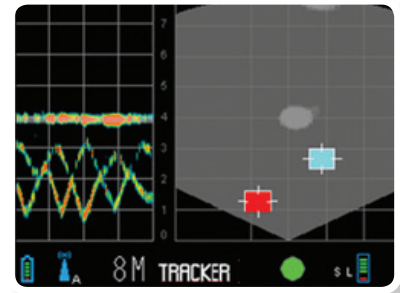
TECHNOLOGY

The Xaver™ 400 utilizes a state-of-the-art system architecture, encompassing multiple cutting edge technologies. A unique, multichannel micro-power Ultra-Wideband (UWB) sensor that operates at very high bandwidth enables reliable detection and high object resolution. Mathematical image reconstruction algorithms are used to cope with cluttered environments resulting in a high quality and intuitive image. Simple operation and compact packaging are key features of the design.

FEATURES

- Optimized rugged compact design
- Ready to use at the push of a button
- Highly reliable detection through most common wall materials
- Simple user interface for clear and immediate interpretation
- Tracking capabilities
- 20m detection range
- Simultaneous detection of static and living objects
- Enables Stand-off operation (within the detection range)
- Sensitivity to detect non-moving live objects
- Unique algorithms and signal processing
- Optional wireless capability for remote monitoring and control

XAVER™ 400 USER INTERFACE



TECHNICAL SPECIFICATIONS

Device type	Compact through-wall radar
Penetrable wall materials	Cement, plaster, brick, concrete, reinforced concrete, adobe, drywall and other standard building materials
Detection range	4m, 8m, 20m
Field of view	120° in both Azimuth and Elevation
Display mode	Plain view, range over time (history), high penetration and 3D view
Frequency range	3GHz to 10GHz
Resolution	Range: Better than 5cm; Cross Range: Better than 50cm at 8m
Dimensions	L: 37cm, W: 22.5cm, D: 12cm
Weight	3.2kg including battery
Power supply	Rechargeable battery, mains power source
Battery operation time	3.5 hours, additional battery: 3.5 hours, Total 7 hours
Wireless capability	Optional built-in wireless module for remote monitoring and control
Accessories	External battery charger, additional battery, power supply, hard-shell carrying case, tripod, tactical backpack, XaverNet™ (optional remote wireless ToughPad)

RADIATION SAFETY

The Xaver™ 400 is completely radiation safe. It is designed to provide superior performance while meeting the requirements of ICNIRP-1998 radiation exposure restriction.



Camero-Tech Ltd.

Intergama Building Level 3 | Grand Netter Industrial Zone | P.O Box 3521, Kfar Netter 4059300, Israel Tel: +972-73-7172333 | Fax: +972-73-7172323 | info@camero-tech.com

Specifications are subject to change without notice. Information, products, processes and technologies described in this document may be subject to intellectual property rights. These rights are reserved by Camero-Tech Ltd. or other owner thereof. Xaver™ is a registered trademark of Camero-Tech Ltd.. Please contact Camero for further details.